

# FOR LEASE

**M**  
**MELVIN MARK**  
EST. 1945



## FIFTH AVENUE BUILDING

*1400 SW Fifth Avenue, Portland, Oregon 97201*

*Suite 670: 2,190 RSF*

*\$26.50/RSF Full Service*

*3:1,000 Monthly Parking Available within 1 Block*

**PAUL ANDREWS**

503.546.4542

[pmandrews@melvinmark.com](mailto:pmandrews@melvinmark.com)

Licensed in OR

**CHAD ALEXANDER**

503.546.4526

[calexander@melvinmark.com](mailto:calexander@melvinmark.com)

Licensed in OR

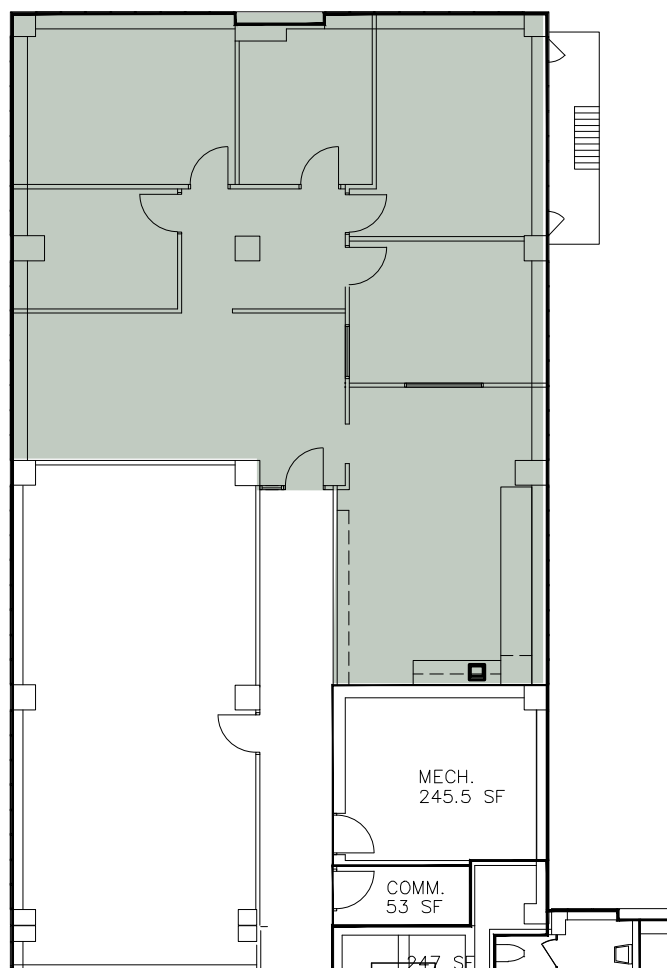
Melvin Mark Brokerage Co.

111 Southwest Columbia

Portland, Oregon 97201

P: 503.223.9203 | [melvinmark.com](http://melvinmark.com)





## ***Amenities include***

- Conference room available on the 6th floor
- Secure / indoor bike storage
- Private showers and day-use lockers available

## **SUITE 670 2,190 RSF** (approx.)

*\$26.50/RSF Full Service*

*3:1,000 Monthly Parking Available within 1 Block*

**PAUL ANDREWS**  
503.546.4542  
pmandrews@melvinmark.com  
Licensed in OR

**CHAD ALEXANDER**  
503.546.4526  
calexander@melvinmark.com  
Licensed in OR





MELVIN MARK

EST. 1945

## FOR LEASE **FIFTH AVENUE BUILDING**

*1400 SW Fifth Avenue | Portland, OR 97201*

**PAUL ANDREWS**

503.546.4542

[pmandrews@melvinmark.com](mailto:pmandrews@melvinmark.com)

Licensed in OR

**CHAD ALEXANDER**

503.546.4526

[calexander@melvinmark.com](mailto:calexander@melvinmark.com)

Licensed in OR

*The information contained herein has been obtained from sources we deem reliable.*

*We do not, however guarantee its accuracy. All information should be independently verified prior to purchase or lease.*